



CSA TECK 90 1000V PVC CONTROL CABLE

1000V Multi Conductor, 14-10 AWG Copper, FT4 - Flame Retardancy Rating, XLPE Insulation, Aluminum Interlocked Armour, Sunlight Resistant, -40°C - 90°C, Rated HL, AG14

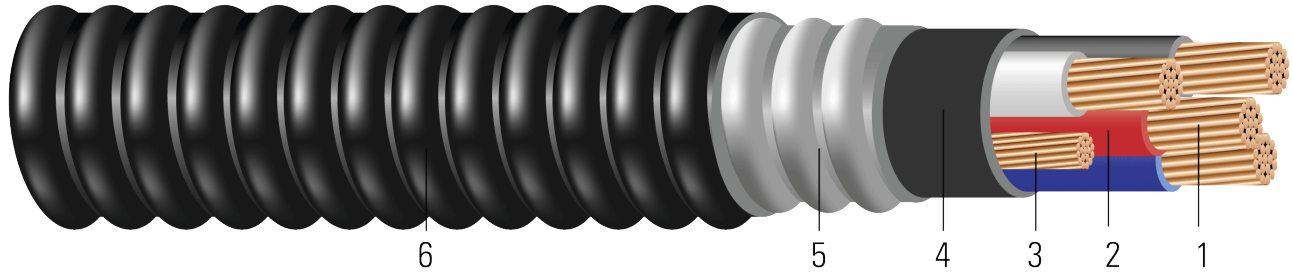


Image not to scale. See Table 1 for dimensions.

CONSTRUCTION:

1. **Conductor:** Class B stranded copper, compressed or compact, in accordance with ASTM B3 and B8.
2. **Insulation:** Cross-Linked Polyethylene (XLPE), Colour Code: 2/C black, white; 3/C red, black, blue; 4/C red, black, blue, white
3. **Grounding Conductors:** Uninsulated Class B stranded grounding conductor
4. **Inner Jacket:** Black Polyvinyl Chloride (PVC)
5. **Armor:** Aluminum Interlocked Armour (AIA)
6. **Overall Jacket:** Black PVC (optional colours available)

APPLICATIONS AND FEATURES:

For exposed or concealed wiring in wet or dry locations. For use in ventilated, non-ventilated and ladder type cable troughs and ventilated flexible cableway in wet, dry, or hazardous locations. Sunlight Resistant. Typical applications are for control, lighting and power circuits in: pulp and paper mills, steel mills, food processing plants, commercial centers, mines, generating stations, refineries, industrial plants and chemical plants.

- -40°C - CSA Cold Bend and Impact Temperature
- -40°C - Min. Installation Temperature
- 90°C - Max. Continuous Operating Temperature

SPECIFICATIONS:

- ASTM B3 Soft or Annealed Copper Wire
- ASTM B8 Concentric-Lay-Stranded Copper Conductors
- CSA C22.2 No. 174 Cables in Hazardous Locations
- CSA C22.2 No. 131 Type TECK 90 Cable
- CSA C22.2 No. 2556 & No. 0.3 Wire and Cable Test Methods
- CSA LTGG [-40°C] - as per C68.10 - for Cold Bend and Impact rating
- CSA HL - for Hazardous Locations rating
- CSA SUN RES - for Sunlight Resistant rating
- CSA AG14 - Acid Gas Compliance
- IEEE 383 Flame Test (70,000 btu)
- IEEE 1202 FT4 Flame Test (70,000) BTU/hr Vertical Tray Test





SAMPLE PRINT LEGEND:

{SQMTR} SOUTHWIRE {CSA} LL90458 X/C XX AWG CU TECK 90 XLPE -40°C FT4 AG14 SUN RES 90°C 1000V HL USA

Table 1 – Weights and Measurements

Stock Number	Cond. Size	Cond. Number	Strand	Insul. Thickness	Ground	Inner Jacket Thickness	Dia. Over Armour	Overall Jacket Thickness	Approx. OD	Approx. Weight	Min Bending Radius	Max Pull Tension	DC Resistance @ 25°C	AC Resistance @ 75°C	Inductive Reactance @ 60Hz	Allowable Ampacity In Raceway 90°C†
	AWG/Kcmil		No.	mil	No. x AWG	mil	inch	mil	inch	lb/1000ft	inch	lb	Ω/1000ft	Ω/1000ft	Ω/1000ft	Amp
TBA	14	3	7	45	1x14	50	0.660	50	0.760	257	5.3	98	2.631	3.170	0.058	25
568448◊	14	4	7	45	1x14	65	0.690	45	0.780	279	5.4	131	2.631	3.170	0.058	20
TBA	12	2	7	45	1x14	50	0.669	50	0.769	258	5.3	104	1.662	2.002	0.054	30
TBA	12	3	7	45	1x14	65	0.698	50	0.798	296	5.5	156	1.662	2.002	0.054	30
596503	12	4	7	45	1x14	65	0.775	45	0.865	354	6.0	208	1.662	2.002	0.054	24
582003◊	10	2	7	45	1x12	65	0.723	45	0.813	303	5.6	166	1.040	1.253	0.050	40
TBA	10	3	7	45	1x12	65	0.781	50	0.881	384	6.1	249	1.040	1.253	0.050	40
568611◊	10	4	7	45	1x12	65	0.833	45	0.923	435	6.4	332	1.040	1.253	0.050	32

All dimensions are nominal and subject to normal manufacturing tolerances
◊ Cable marked with this symbol is a standard stock item

Table 2 – Weights and Measurements (Metric)

Stock Number	Cond. Size	Cond. Number	Strand	Insul. Thickness	Ground	Inner Jacket Thickness	Dia. Over Armour	Jacket Thickness ¹	Approx. OD	Approx. Weight	Min Bending Radius	Max Pull Tension	DC Resistance @ 25°C	AC Resistance @ 75°C	Inductive Reactance @ 60Hz	Allowable Ampacity In Raceway 90°C
	AWG/Kcmil		No.	mm	No. x AWG	mm	mm	mm	mm	kg/km	mm	newton	Ω/km	Ω/km	Ω/km	Amp
TBA	14	3	7	1.14	1x14	1.27	16.76	1.27	19.30	382	134.62	436	8.63	10.40	0.1903	25
568448◊	14	4	7	1.14	1x14	1.65	17.53	1.14	19.81	415	137.16	583	8.63	10.40	0.1903	20
TBA	12	2	7	1.14	1x14	1.27	16.99	1.27	19.53	384	134.62	463	5.45	6.57	0.1772	30
TBA	12	3	7	1.14	1x14	1.65	17.73	1.27	20.27	440	139.70	694	5.45	6.57	0.1772	30
596503	12	4	7	1.14	1x14	1.65	19.69	1.14	21.97	527	152.40	926	5.45	6.57	0.1772	24
582003◊	10	2	7	1.14	1x12	1.65	18.36	1.14	20.65	451	142.24	739	3.41	4.11	0.1640	40
TBA	10	3	7	1.14	1x12	1.65	19.84	1.27	22.38	571	154.94	1108	3.41	4.11	0.1640	40
568611◊	10	4	7	1.14	1x12	1.65	21.16	1.14	23.44	647	162.56	1477	3.41	4.11	0.1640	32

All dimensions are nominal and subject to normal manufacturing tolerances
◊ Cable marked with this symbol is a standard stock item

