



## **Galflex® Type RWS Reduced Wall Steel Flexible Metal Conduit**

Steel Flexible Metal Conduit. High Strength Steel Strip. UL Recognized Component in 5/16". UL Listed in 3/8" through 3". CSA Certified for Trade Sizes 5/16" and 3/8" Available Upon Request.

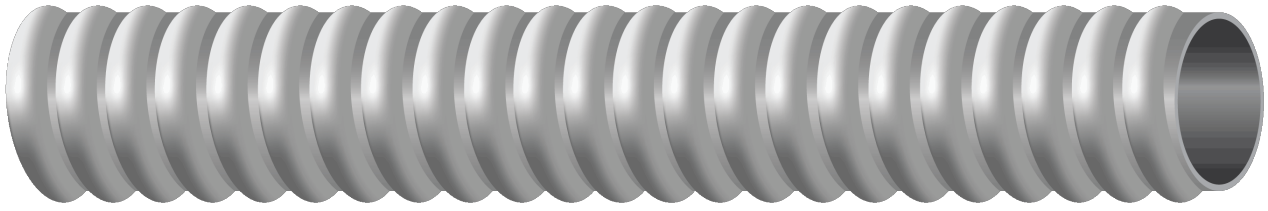


Image not to scale. See Table 1 for dimensions.

### **CONSTRUCTION:**

1. **Aarmor:** Galflex® Type RWS is manufactured with a galvanized, corrosion resistant, high strength steel alloy. The metal strip is helically formed into a continuously interlocked flexible metal conduit that can withstand impact and crushing forces.

### **APPLICATIONS AND FEATURES:**

Galflex® Type RWS (Reduced Wall Steel) Flexible Metal Conduit is suitable for the following installations:

- Environmental air-handling spaces per NEC 300.22(C)
- Power and lighting branch circuit conductors and cables for connecting receptacles, luminaires, equipment, office partitions, etc.
- Metal raceway for wires and cables per NEC (ANSI/NFPA-70) Article 348
- Motor feeder, branch, and control circuit conductors and cables
- Class 1, Class 2, Class 3 Remote-control, signaling, and power-limited circuit conductors and cables
- Fire alarm system conductors and cables of power-limited or non-power-limited fire alarm circuits
- Voice, data, communications and video cables including CATV and optical fiber cables.
- Concealed or exposed installations per NEC 348 and the applicable NEC provisions.
- Elevators, hoistways, and escalators per NEC 620.21
- Listed wired fixtures per NEC 410.77(C)
- Raised floors for connection of information technology per NEC 645.5(D)(2) and 645.5(D)
- As a grounding conductor for lengths up to 6 feet (20A max) as per NEC 250.118(5)
- Cranes & hoists per NEC 610.11(C)
- Electric signs and outline lighting per NEC 600.7, 600.31 (1000 volts or less), and 600.32 (>1000 volts)
- Hazardous location, Class 1, Div. 2, for flexible connectors only per NEC 501.10(B)(2) & 501.30(B)
- UL 1, 2, & 3 Hour Through-Penetration Firestop Systems: C-AJ-1462, C-AJ-1463, C-AJ-1464, W-L-1308, and W-L-1309

**Southwire Galflex® Type RWS (Reduced Wall Steel) meets or exceeds the following requirements:**

- UL Listed per UL 1, Standard for Safety for Flexible Metal Conduit, ANSI/UL-1
- Meets federal specification WW-C-566c
- NEC Type Designation - Article 348, Type FMC (flexible metal conduit)
- UL Product Category- DXUZ





- REACH/RoHS-2 (Chemical Limit) Compliant

#### Features

- Provides mechanical protection for conductors and cable
- For use with listed connectors intended for NEC Type FMC (Flexible Metal Conduit)
- Smooth interior for easy wire pulling
- High strength steel construction
- Superior crush proof qualities
- Hot-dipped, heavy zinc coating for rust/corrosion resistance
- Built in flexibility for simplified positioning

#### SPECIFICATIONS:

- UL 1 Standard for Safety Flexible Metal Conduit
- CSA 22.2 No. 56 Flexible metal conduit and liquid-tight flexible metal conduit
- NFPA 70 (National Electrical Code), Article 348 - Flexible Metal Conduit

#### Galflex® Type RWS

Trade Size	Inner Diam (Min/Max)	Outer Diam (Min/Max)	Weight	Minimum Bend Radius
Inch	Inch	Inch	Lb/100ft	Inch
5/16	0.312/0.337	0.470/0.510	13	2.5
3/8	0.375/0.393	0.560/0.610	19	3
1/2	0.625/0.645	0.860/0.920	27	4
3/4	0.812/0.835	1.045/1.105	35	5
1	1.000/1.040	1.300/1.380	57	8
1-1/4	1.250/1.300	1.550/1.630	65	10
1-1/2	1.500/1.575	1.850/1.950	78	12
2	2.000/2.080	2.350/2.450	133	16
2-1/2	2.5	2.860/3.060	150	20
3	3.0	3.360/3.560	190	24
3-1/2	3.5	3.860/4.060	220	28
4	4.0	4.360/4.560	270	32

\* Suggestion only. Non-NEC requirement





**Put Ups**

Trade Size (Inch)	25 ft	50 ft	100 ft	150 ft	250 ft	300 ft	400 ft	500 ft	600 ft	1000 ft
5/16			55283202		55283205			55283206		
3/8			55081702		55081704					55081703
1/2			55081802		55081801					55081803
3/4			55081902		55081903					55081906
1		55091601					55091602			
1-1/4		55091701			55091706		55091702			
1-1/2	55091801			55091803		55091802				
2	55091901		55091904	55091902						
2-1/2	55092001		55092003	55092005						
3	55092201		55092203							
3-1/2	55092301		55092303							
4	55092401		55092402							

