



## **Alflex™ Type RWA Reduced Wall Aluminum Flexible Metal Conduit**

Aluminum Flexible Metal Conduit. High Strength Aluminum Alloy Strip. 5/16" is UL Recognized Component. UL Listed in sizes 3/8" to 4".

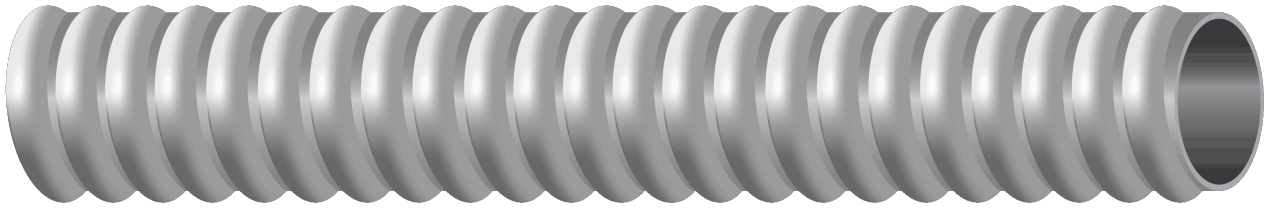


Image not to scale. See Table 1 for dimensions.

### **CONSTRUCTION:**

1. **Aarmor:** Alflex™ Type RWA is manufactured with a lightweight, high strength aluminum alloy. Metal strip is helically formed into continuously interlocked flexible metal conduit that can withstand impact and crushing forces.

### **APPLICATIONS AND FEATURES:**

**Alflex™ Type RWA (Reduced Wall Aluminum) Flexible Metal Conduit is suitable for the following installations:**

- Environmental air-handling spaces per NEC 300.22(C)
- Power and lighting branch circuit conductors and cables for connecting receptacles, luminaires, equipment, office partitions, etc.
- Metal raceway for wires and cables per NEC (ANSI/NFPA-70) Article 348
- Motor feeder, branch, and control circuit conductors and cables
- Class 1, Class 2, Class 3 Remote-control, signaling, and power-limited circuit conductors and cables
- Fire alarm system conductors and cables of power-limited or non-power-limited fire alarm circuits
- Voice, data, communications and video cables including CATV and optical fiber cables.
- Concealed or exposed installations per NEC 348 and the applicable NEC provisions.
- Elevators, hoistways, and escalators per NEC 620.21
- Listed wired fixtures per NEC 410.77(C)
- Raised floors for connection of information technology per NEC 645.5(D)(2) and 645.5(D)
- As a grounding conductor for lengths up to 6 feet (20A max) as per NEC 250.118(5)
- Cranes & hoists per NEC 610.11(C)
- Electric signs and outline lighting per NEC 600.7, 600.31 (1000 volts or less), and 600.32 (>1000 volts)
- Hazardous location, Class 1, Div. 2, for flexible connectors only per NEC 501.10(B)(2) & 501.30(B)
- UL 1, 2, & 3 Hour Through-Penetration Firestop Systems: C-AJ-1462, C-AJ-1463, C-AJ-1464, W-L-1308, and W-L-1309

**Southwire Alflex™ Type RWA (Reduced Wall Aluminum) meets or exceeds the following requirements:**

- UL Listed per UL 1, Standard for Safety for Flexible Metal Conduit, ANSI/UL-1
- Meets federal specification WW-C-566c
- NEC Type Designation - Article 348, Type FMC (flexible metal conduit)
- UL Product Category- DXUZ





- REACH/RoHS-2 (Chemical Limit) Compliant

#### Features:

- Provides mechanical protection for conductors and cable
- For use with listed connectors intended for NEC Type FMC (Flexible Metal Conduit)
- 66% lighter than steel
- Cuts 80% faster than steel
- Smooth interior for easy wire pulling
- High strength aluminum alloy construction
- Superior corrosion resistance
- Built in flexibility for simplified positioning

#### Alflex™ - Type RWA

Trade Size	Inner Diameter (Min / Max)	Outer Diameter (Min / Max)	Weight	Minimum Bending Radius
inch	inch	inch	lb/100ft	inch
3/8	0.375 / 0.393	0.560 / 0.610	7	3*
1/2	0.625 / 0.645	0.860 / 0.920	9	4
3/4	0.812 / 0.835	1.045 / 1.105	13	5
1	1.000 / 1.040	1.300 / 1.380	20	8
1-1/4	1.250 / 1.300	1.550 / 1.630	24	10
1-1/2	1.500 / 1.575	1.850 / 1.950	31	12
2	2.000 / 2.080	2.350 / 2.450	40	16
2-1/2	2.5	2.860 / 3.060	65	20
3	3.0	3.360 / 3.560	77	24

\* Suggestion only. Non-NEC requirement

#### Put Ups

Trade Size	Stock Code								
inch	25 ft	50 ft	100 ft	150 ft	250 ft	300 ft	400 ft	500 ft	1000 ft
3/8			55082003		55082006				55082004
1/2			55082103					55082102	55082104
3/4			55082303					55082304	55082306
1		55092501					55092502		
1-1/4		55092601			55092603		55092602		
1-1/2	55092701			55092703		55092702			
2	55-09-28-01		55092803	55092802					
2-1/2	55106001			55106002					
3	55106101		55106102						

