

Triplex XLPE Service Drop. Reduced ACSR Neutral - Messenger

Aluminum Conductors With Crosslinked Polyethylene Insulation.

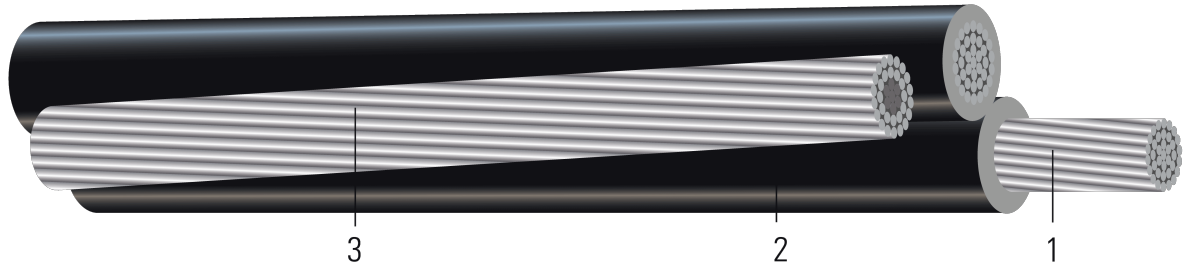


Image not to scale. See Table 1 for dimensions.

CONSTRUCTION:

- Conductor:** Conductors are stranded, compressed 1350-H19 aluminum
- Insulation:** Cross Linked Polyethylene (XLPE)
- Messenger:** ACSR Neutral

SPECIFICATIONS:

- ASTM B230 Aluminum, 1350-H19 Wire for Electrical Purposes
- ASTM B231 Standard Specification for Concentric-Lay-Stranded Aluminum 1350 Conductors
- ASTM B400 Standard Specification for Compact Round Concentric-Lay-Stranded, Aluminum 1350 Conductors
- ASTM B901 Standard Specification for Compressed Round Stranded Aluminum Conductors Using Single Input Wire Construction. *(The number of strands for both phase and neutral may differ)*
- ICEA S-76-474 Standard for Neutral-Supported Power Cable Assemblies with Weather-Resistant Extruded Insulation Rated 600V

Table 1 – Weights and Measurements

| Stock Number | Code Word | Phase Cond. Size | Phase Strand | Dia. Over Phase Conductor | Phase Insul. Thickness | Dia. Over Phase Insulation | Neutral Cond. Size | Neutral Strand | Approx. OD | Approx. Weight |
|--------------|-----------|------------------|--------------|---------------------------|------------------------|----------------------------|--------------------|----------------|------------|----------------|
| | | AWG/Kcmil | No. | inch | mil | inch | AWG/Kcmil | No. | inch | lb/1000ft |
| TBA | Scallop | 4 | Solid | 0.204 | 30 | 0.264 | 6 | 6/1 | 0.264 | 73 |
| 104927 | Strombus | 4 | 7 | 0.225 | 30 | 0.285 | 6 | 6/1 | 0.679 | 148 |
| 104935 | Cockle | 2 | 7 | 0.282 | 45 | 0.372 | 4 | 6/1 | 0.806 | 225 |
| 104950 | Ranella | 1/0 | 9 | 0.361 | 60 | 0.481 | 2 | 6/1 | 1.019 | 361 |
| 104943 | Janthina | 1/0 | 7 | 0.361 | 60 | 0.481 | 2 | 6/1 | 1.031 | 362 |
| 104976 | Clio | 2/0 | 11 | 0.405 | 60 | 0.525 | 1 | 6/1 | 1.112 | 445 |
| 104968 | Cavolinia | 2/0 | 7 | 0.405 | 60 | 0.525 | 1 | 6/1 | 1.126 | 446 |
| 104984 | Aega | 3/0 | 17 | 0.456 | 60 | 0.576 | 1/0 | 6/1 | 1.216 | 547 |
| 102897! | Aega | 3/0 | 17 | 0.456 | 60 | 0.576 | 1/0 | 6/1 | 1.216 | 547 |
| 104992 | Cerapus | 4/0 | 18 | 0.512 | 60 | 0.632 | 2/0 | 6/1 | 1.334 | 277 |
| TBA | Cowry | 336.4 | 19 | 0.646 | 60 | 0.766 | 4/0 | 6/1 | 0.766 | 578 |

All dimensions are nominal and subject to normal manufacturing tolerances

1. The actual number of strands may differ for single input wire per ASTM B901

! Linear Low Density Polyethylene (LLDPE) instead of XLPE insulation





Table 2 – Electrical and Engineering Data

| Code Word | Phase Cond. Size | Neutral Rated Breaking Strength | DC Resistance @ 25°C | AC Resistance @ 75°C | Inductive Reactance @ 60Hz | GMR | Allowable Ampacity In Air 90°C |
|-----------|------------------|---------------------------------|----------------------|----------------------|----------------------------|-------|--------------------------------|
| | AWG/Kcmil | lb | Ω/1000ft | Ω/1000ft | Ω/1000ft | ft | Amp |
| Scallop | 4 | 1190 | 0.258 | 0.310 | 0.048 | 0.007 | 100 / 115 |
| Strombus | 4 | 1190 | 0.424 | 0.511 | 0.048 | 0.007 | 100 / 115 |
| Cockle | 2 | 1860 | 0.266 | 0.320 | 0.045 | 0.008 | 135 / 150 |
| Ranella | 1/0 | 2853 | 0.167 | 0.201 | 0.044 | 0.011 | 180 / 205 |
| Janthina | 1/0 | 2850 | 0.167 | 0.201 | 0.044 | 0.011 | 180 / 205 |
| Clio | 2/0 | 3550 | 0.133 | 0.159 | 0.043 | 0.013 | 210 / 235 |
| Cavolinia | 2/0 | 3550 | 0.133 | 0.159 | 0.043 | 0.013 | 210 / 235 |
| Aega | 3/0 | 4380 | 0.105 | 0.126 | 0.042 | 0.014 | 240 / 270 |
| Aega | 3/0 | 4380 | 0.105 | 0.126 | 0.042 | 0.014 | 240 / 270 |
| Cerapus | 4/0 | 5310 | 0.084 | 0.100 | 0.041 | 0.016 | 280 / 315 |
| Cowry | 336.4 | 8350 | 0.051 | 0.062 | 0.041 | 0.021 | 395 / 445 |

Notes:

1. DC resistances include a 1% length factor for plexing.
2. Inductive reactance assumes the neutral is carrying current.
3. Phase conductors assumed to be reverse lay stranded, compressed construction.
4. Phase spacing assumes cables are touching.
5. Resistances shown are for the phase conductor only.
6. Ampacity based on conductor temperature of 90°; ambient temperature of 40°C; emissivity 0.9; 2 ft./sec. wind in sun.

Neutral Code Word

| Size-Strands | Code Word | OD (inches) |
|--------------|-----------|-------------|
| #4 | Swan | 0.250 |
| #2 | Sparrow | 0.316 |
| 1/0 | Raven | 0.398 |
| 2/0 | Quail | 0.447 |
| 3/0 | Pigeon | 0.502 |
| 4/0 | Penguin | 0.684 |
| 336.4 | Merlin | 0.563 |

