



Duplex XLPE Service Drop. AAC Neutral - Messenger

Aluminum Conductors With Crosslinked Polyethylene Insulation.

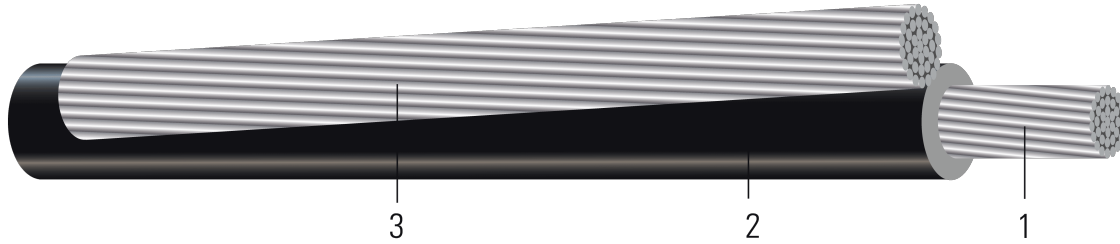


Image not to scale. See Table 1 for dimensions.

CONSTRUCTION:

- Conductor:** Conductors are stranded, compressed 1350-H19 aluminum
- Insulation:** Cross Linked Polyethylene (XLPE)
- Messenger:** AAC Neutral

APPLICATIONS AND FEATURES:

Primarily used for 120 volt overhead service applications such as street lighting, outdoor lighting, and temporary service for construction. To be used at voltages of 600 volts phase-to-phase or less and at conductor temperatures not to exceed 90°C for crosslinked polyethylene (XLP) insulated conductors.

SPECIFICATIONS:

- ASTM B230 Aluminum, 1350-H19 Wire for Electrical Purposes
- ASTM B231 Standard Specification for Concentric-Lay-Stranded Aluminum 1350 Conductors
- ASTM B901 Standard Specification for Compressed Round Stranded Aluminum Conductors Using Single Input Wire Construction. *(The number of strands for both phase and neutral may differ)*
- ICEA S-76-474 Standard for Neutral-Supported Power Cable Assemblies with Weather-Resistant Extruded Insulation Rated 600V

Table 1 – Weights and Measurements

Stock Number	Code Word	Phase Cond. Size	Phase Strand	Dia. Over Phase Conductor	Phase Insul. Thickness	Dia. Over Phase Insulation	Neutral Cond. Size	Neutral Strand	Approx. OD	Approx. Weight
		AWG/Kcmil	No.	inch	mil	inch	AWG/Kcmil	No.	inch	lb/1000ft
104596	Pekingese	6	1	0.162	30	0.222	6	7	0.435	60
104604	Collie	6	7	0.177	30	0.237	6	7	0.451	63
TBA	Dachshund	4	Solid	0.204	30	0.264	4	7	0.530	158
TBA	Spaniel	4	7	0.225	30	0.285	4	7	0.572	164
TBA	Doberman	2	7	0.282	45	0.372	2	7	0.746	273
TBA	Malemute	1/0	19	0.361	60	0.481	1/0	7	0.964	444

All dimensions are nominal and subject to normal manufacturing tolerances
 1. The actual number of strands may differ for single input wire per ASTM B901





Table 2 – Electrical and Engineering Data

Code Word	Phase Cond. Size	Neutral Rated Breaking Strength	DC Resistance @ 25°C	AC Resistance @ 75°C	Inductive Reactance @ 60Hz	GMR	Allowable Ampacity In Air 90°C
	AWG/Kcmil	lb	Ω/1000ft	Ω/1000ft	Ω/1000ft	ft	Amp
Pekingese	6	563	0.411	0.495	0.051	0.005	75 / 85
Collie	6	563	0.674	0.812	0.051	0.005	75 / 85
Dachshund	4	881	0.258	0.310	0.048	0.007	100 / 115
Spaniel	4	881	0.424	0.511	0.048	0.007	100 / 115
Doberman	2	1350	0.266	0.320	0.045	0.008	135 / 150
Malemute	1/0	1990	0.167	0.201	0.044	0.011	180 / 205

Notes:

1. DC resistances include a 1% length factor for plexing.
2. Inductive reactance assumes the neutral is carrying current.
3. Phase conductors assumed to be reverse lay stranded, compressed construction.
4. Phase spacing assumes cables are touching.
5. Resistances shown are for the phase conductor only.
6. Ampacity based on conductor temperature of 90°; ambient temperature of 40°C; emissivity 0.9; 2 ft./sec. wind in sun.

Neutral Code Word

Size-Strands	Code Word	OD (inches)
#6-7	Peachbell	0.184
#4-7	Rose	0.232
#2-7	Iris	0.292
1/0-7	Poppy	0.368

