



Triplex Poly Service Drop. AAAC 6201 Alloy Reduced Neutral - Messenger

Aluminum Conductors With Polyethylene Insulation.

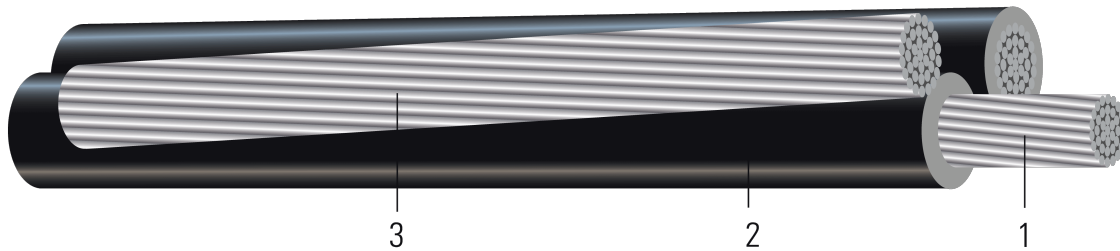


Image not to scale. See Table 1 for dimensions.

CONSTRUCTION:

- Conductor:** Conductors are stranded, compressed 1350-H19 aluminum
- Insulation:** Polyethylene (PE)
- Messenger:** AAAC Neutral

APPLICATIONS AND FEATURES:

Used to supply power, usually from a pole-mounted transformer, to the user's service head where connection to the service entrance cable is made. To be used at voltages of 600 volts phase-to-phase or less and at conductor temperatures 90°C for polyethylene (PE) insulated conductors.

SPECIFICATIONS:

- ASTM B230 Aluminum, 1350-H19 Wire for Electrical Purposes
- ASTM B231 Standard Specification for Concentric-Lay-Stranded Aluminum 1350 Conductors
- ASTM B400 Standard Specification for Compact Round Concentric-Lay-Stranded, Aluminum 1350 Conductors
- ASTM B901 Standard Specification for Compressed Round Stranded Aluminum Conductors Using Single Input Wire Construction. *(The number of strands for both phase and neutral may differ)*
- ICEA S-76-474 Standard for Neutral-Supported Power Cable Assemblies with Weather-Resistant Extruded Insulation Rated 600V

Table 1 – Weights and Measurements

Code Word	Phase Cond. Size	Phase Strand	Dia. Over Phase Conductor	Phase Insul. Thickness	Dia. Over Phase Insulation	Neutral Cond. Size	Neutral Strand	Approx. OD	Approx. Weight
	AWG/Kcmil	No.	inch	mil	inch	AWG/Kcmil	No.	inch	lb/1000ft
Artemia	4	Solid	0.204	30	0.264	6	7	0.572	190
Crab	4	7	0.225	30	0.285	6	7	0.618	198
Solaster	2	7	0.282	45	0.372	4	7	0.806	328
Echinus	1/0	19	0.361	60	0.481	2	7	1.041	535
Sandcrab	1/0	19	0.361	60	0.481	2	7	1.041	535
Sipho	2/0	19	0.405	60	0.525	1	7	1.136	652
Crayfish	2/0	19	0.405	60	0.525	1	7	1.136	652
Fulgar	3/0	19	0.456	60	0.576	1/0	7	1.246	797
Arca	4/0	19	0.512	60	0.632	2/0	7	1.367	978



All dimensions are nominal and subject to normal manufacturing tolerances

1. The actual number of strands may differ for single input wire per ASTM B901

TBA stock codes are estimations only and actual product may vary. Please wait until a stock code is assigned to purchase connectors and/or fittings.

Table 2 – Electrical and Engineering Data

Code Word	Phase Cond. Size	Neutral Rated Breaking Strength	DC Resistance @ 25°C	AC Resistance @ 75°C	Inductive Reactance @ 60Hz	GMR	Allowable Ampacity In Air 75/90°C
	AWG/Kcmil	lb	Ω/1000ft	Ω/1000ft	Ω/1000ft	ft	Amp
Artemia	4	1110	0.258	0.310	0.048	0.007	100 / 115
Crab	4	1110	0.424	0.511	0.048	0.007	100 / 115
Solaster	2	1760	0.266	0.320	0.045	0.008	135 / 150
Echinus	1/0	2800	0.167	0.201	0.044	0.011	180 / 205
Sandcrab	1/0	2800	0.167	0.201	0.044	0.011	180 / 205
Sipho	2/0	3530	0.133	0.159	0.043	0.013	210 / 235
Crayfish	2/0	3530	0.133	0.159	0.043	0.013	210 / 235
Fulgar	3/0	4270	0.105	0.126	0.042	0.014	240 / 270
Arca	4/0	5390	0.084	0.100	0.041	0.016	280 / 315

Notes:

1. DC resistances include a 1% length factor for plexing.
2. Inductive reactance assumes the neutral is carrying current.
3. Phase conductors assumed to be reverse lay stranded, compressed construction.
4. Phase spacing assumes cables are touching.
5. Resistances shown are for the phase conductor only.
6. Sizes of AAAC neutrals are not the AAAC size, but are the size of an ACSR of equal diameter.
7. Ampacity based on conductor temperature of 90°; ambient temperature of 40°C; emissivity 0.9; 2 ft./sec. wind in sun.