



CSA TECK 90 1000V PVC POWER CABLE

1000V Multi Conductor, 8AWG -1000 Kcmil Copper, FT4 - Flame Retardancy Rating, XLPE Insulation, Aluminum Interlocked Armour, Sunlight Resistant, -40°C - 90°C, Rated HL, AG14

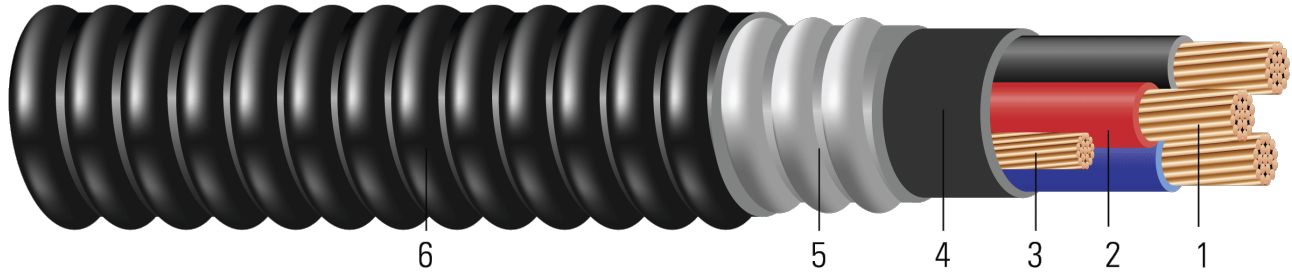


Image not to scale. See Table 1 for dimensions.

CONSTRUCTION:

1. **Conductor:** Class B stranded copper, compressed or compact, in accordance with ASTM B3 and B8.
2. **Insulation:** Cross-Linked Polyethylene (XLPE), Colour Code: 2/C black, white; 3/C red, black, blue; 4/C red, black, blue, white; For cables larger than No. 2 AWG or more than 4/C, the insulation is black and numbered
3. **Grounding Conductors:** Uninsulated Class B stranded grounding conductor
4. **Inner Jacket:** Black Polyvinyl Chloride (PVC)
5. **Armor:** Aluminum Interlocked Armour (AIA)
6. **Overall Jacket:** Black PVC (optional colours available)

APPLICATIONS AND FEATURES:

For exposed or concealed wiring in wet or dry locations. For use in ventilated, non-ventilated and ladder type cable troughs and ventilated flexible cableway in wet, dry, or hazardous locations. Sunlight Resistant. Typical applications are for control, lighting and power circuits in: pulp and paper mills, steel mills, food processing plants, commercial centers, mines, generating stations, refineries, industrial plants and chemical plants. Rated for 1000 lbs./FT maximum sidewall pressure.

- -40°C - CSA Cold Bend and Impact Temperature
- -25°C - Min. Installation Temperature
- 90°C - Max. Continuous Operating Temperature

SPECIFICATIONS:

- ASTM B3 Soft or Annealed Copper Wire
- ASTM B8 Concentric-Lay-Stranded Copper Conductors
- CSA C22.2 No. 174 Cables in Hazardous Locations
- CSA C22.2 No. 131 Type TECK 90 Cable
- CSA C22.2 No. 2556 & No. 0.3 Wire and Cable Test Methods
- CSA LTGG [-40°C] - as per C68.10 - for Cold Bend and Impact rating
- CSA HL - for Hazardous Locations rating
- CSA SUN RES - for Sunlight Resistant rating
- CSA AG14 - Acid Gas Compliance
- IEEE 383 Flame Test (70,000 btu)
- IEEE 1202 FT4 Flame Test (70,000) BTU/hr Vertical Tray Test





SAMPLE PRINT LEGEND:

{SQMTR} SOUTHWIRE {CSA} LL90458 X/C XX AWG CU TECK 90 XLPE -40°C FT4 AG14 SUN RES 90°C 1000V HL USA





Table 1 – Weights and Measurements

Stock Number	Cond. Size	Cond. Number	Strand	Insul. Thickness	Ground	Inner Jacket Thickness	Dia. Over Armour	Overall Jacket Thickness	Approx. OD	Approx. Weight	Min Bending Radius	Max Pull Tension	DC Resistance @ 25°C	AC Resistance @ 75°C	Inductive Reactance @ 60Hz	Allowable Ampacity In Raceway 90°C†
	AWG/ Kcmil		No.	mil	No. x AWG	mil	inch	mil	inch	lb/ 1000ft	inch	lb	Ω/1000ft	Ω/1000ft	Ω/1000ft	Amp
568605 ^A	8	2	7	45	1x10	65	0.809	45	0.899	399	6.2	264	0.653	0.786	0.052	55
671448	8	2	7	45	1x10	65	0.809	45	0.899	397	6.2	264	0.653	0.786	0.052	55
561963	8	3	7	45	1x10	65	0.846	45	0.936	475	6.5	396	0.653	0.786	0.052	55
561964	8	4	7	45	1x10	65	0.905	55	1.015	578	7.1	528	0.653	0.786	0.052	44
573821 ^A	6	2	7	60	1x8	65	0.941	45	1.031	540	7.2	419	0.411	0.495	0.051	75
671452	6	2	7	60	1x8	65	0.941	45	1.031	537	7.2	419	0.411	0.495	0.051	75
561965	6	3	7	60	1x8	65	1.099	45	1.189	714	8.3	629	0.411	0.495	0.051	75
561966	6	4	7	60	1x8	85	1.216	45	1.306	889	9.1	839	0.411	0.495	0.051	60
582005	4	2	7	60	1x8	85	1.144	55	1.254	759	8.7	667	0.258	0.310	0.048	95
561967	4	3	7	60	1x8	85	1.242	45	1.332	958	9.3	1001	0.258	0.310	0.048	95
561968	4	4	7	60	1x8	85	1.330	45	1.420	1150	9.9	1335	0.258	0.310	0.048	76
571184 ^A	2	2	7	60	1x6	85	1.298	55	1.408	1050	9.8	1061	0.162	0.195	0.045	130
671456	2	2	7	60	1x6	85	1.298	55	1.408	1047	9.8	1061	0.162	0.195	0.045	130
561972	2	3	7	60	1x6	85	1.363	45	1.453	1286	10.1	1592	0.162	0.195	0.045	130
561973	2	4	7	60	1x6	85	1.465	45	1.555	1561	10.8	2123	0.162	0.195	0.045	104
561974	1	3	19	80	1x6	85	1.548	55	1.658	1604	11.6	2008	0.128	0.154	0.046	145
561975	1	4	19	80	1x6	85	1.672	55	1.782	1981	12.4	2678	0.128	0.154	0.046	116
561976	1/0	3	19	80	1x6	85	1.632	55	1.742	1859	12.1	2534	0.102	0.122	0.044	170
561978	1/0	4	19	80	1x6	85	1.766	55	1.876	2315	13.1	3379	0.102	0.122	0.044	136
561948	2/0	3	19	80	1x6	85	1.727	55	1.837	2191	12.8	3194	0.081	0.097	0.043	195
561949	2/0	4	19	80	1x6	85	1.885	55	1.995	2787	13.9	4259	0.081	0.097	0.043	156
586400	3/0	2	19	80	1x4	85	1.738	65	1.870	2042	13.0	2684	0.064	0.078	0.042	225
561950	3/0	3	19	80	1x4	85	1.814	55	1.924	2621	13.4	4027	0.064	0.078	0.042	225
561952	3/0	4	19	80	1x4	115	1.989	55	2.099	3342	14.6	5369	0.064	0.078	0.042	180
561953	4/0	3	19	80	1x4	85	1.943	65	2.075	3205	14.5	5078	0.051	0.062	0.041	260
561954	4/0	4	19	80	1x4	115	2.175	65	2.307	4149	16.1	6771	0.051	0.062	0.041	208
561955	250	3	37	90	1x4	115	2.146	55	2.256	3761	15.7	6000	0.043	0.053	0.041	290
561956	250	4	37	90	1x4	115	2.332	65	2.464	4773	17.2	8000	0.043	0.053	0.041	232
561957	300	3	37	90	1x4	115	2.295	65	2.427	4388	16.9	7200	0.036	0.045	0.041	320
561958	300	4	37	90	1x4	115	2.498	65	2.630	5527	18.4	9600	0.036	0.045	0.041	256
561959	350	3	37	90	1x3	115	2.360	65	2.492	4939	17.4	8400	0.031	0.039	0.040	350
561960	350	4	37	90	1x3	115	2.571	65	2.703	6242	18.9	11200	0.031	0.039	0.040	280
561961	500	3	37	90	1x3	115	2.630	65	2.762	6545	19.3	12000	0.022	0.029	0.039	430
561962	500	4	37	90	1x3	115	2.872	65	3.004	8351	21.0	16000	0.022	0.029	0.039	344
592314	600	3	61	90	1x2	115	2.846	80	3.012	7779	21.0	14400	0.018	0.025	0.039	475
568478	750	3	61	90	1x2	115	3.115	80	3.283	9512	22.9	18000	0.014	0.022	0.038	535
568479	750	4	61	90	1x2	145	3.423	80	3.591	12223	25.1	24000	0.014	0.022	0.038	428
641155	1000	3	61	90	1x1	145	3.451	80	3.619	12221	25.3	24000	0.011	0.018	0.037	615





All dimensions are nominal and subject to normal manufacturing tolerances

◇ Cable marked with this symbol is a standard stock item

^ Colour Code: 2/C black, Red





Table 2 – Weights and Measurements (Metric)

Stock Number	Cond. Size	Cond. Number	Strand	Insul. Thickness	Ground	Inner Jacket Thickness	Dia. Over Armour	Jacket Thickness ¹	Approx. OD	Approx. Weight	Min Bending Radius	Max Pull Tension	DC Resistance @ 25°C	AC Resistance @ 75°C	Inductive Reactance @ 60Hz	Allowable Ampacity In Raceway 90°C
	AWG/Kcmil		No.	mm	No. x AWG	mm	mm	mm	mm	kg/km	mm	newton	Ω/km	Ω/km	Ω/km	Amp
568605	8	2	7	1.14	1x10	1.65	20.55	1.14	22.83	594	157.48	1175	2.14	2.58	0.1706	55
671448	8	2	7	1.14	1x10	1.65	20.55	1.14	22.83	591	157.48	1175	2.14	2.58	0.1706	55
561963	8	3	7	1.14	1x10	1.65	21.49	1.14	23.77	707	165.10	1762	2.14	2.58	0.1706	55
561964	8	4	7	1.14	1x10	1.65	22.99	1.40	25.78	860	180.34	2350	2.14	2.58	0.1706	44
573821	6	2	7	1.52	1x8	1.65	23.90	1.14	26.19	804	182.88	1865	1.35	1.62	0.1673	75
671452	6	2	7	1.52	1x8	1.65	23.90	1.14	26.19	799	182.88	1865	1.35	1.62	0.1673	75
561965	6	3	7	1.52	1x8	1.65	27.91	1.14	30.20	1063	210.82	2799	1.35	1.62	0.1673	75
561966	6	4	7	1.52	1x8	2.16	30.89	1.14	33.17	1323	231.14	3734	1.35	1.62	0.1673	60
582005	4	2	7	1.52	1x8	2.16	29.06	1.40	31.85	1130	220.98	2968	0.85	1.02	0.1575	95
561967	4	3	7	1.52	1x8	2.16	31.55	1.14	33.83	1426	236.22	4454	0.85	1.02	0.1575	95
561968	4	4	7	1.52	1x8	2.16	33.78	1.14	36.07	1711	251.46	5941	0.85	1.02	0.1575	76
571184	2	2	7	1.52	1x6	2.16	32.97	1.40	35.76	1563	248.92	4721	0.53	0.64	0.1476	130
671456	2	2	7	1.52	1x6	2.16	32.97	1.40	35.76	1558	248.92	4721	0.53	0.64	0.1476	130
561972	2	3	7	1.52	1x6	2.16	34.62	1.14	36.91	1914	256.54	7084	0.53	0.64	0.1476	130
561973	2	4	7	1.52	1x6	2.16	37.21	1.14	39.50	2323	274.32	9447	0.53	0.64	0.1476	104
561974	1	3	19	2.03	1x6	2.16	39.32	1.40	42.11	2387	294.64	8936	0.42	0.51	0.1509	145
561975	1	4	19	2.03	1x6	2.16	42.47	1.40	45.26	2948	314.96	11917	0.42	0.51	0.1509	116
561976	1/0	3	19	2.03	1x6	2.16	41.45	1.40	44.25	2766	307.34	11276	0.33	0.40	0.1444	170
561978	1/0	4	19	2.03	1x6	2.16	44.86	1.40	47.65	3445	332.74	15037	0.33	0.40	0.1444	136
561948	2/0	3	19	2.03	1x6	2.16	43.87	1.40	46.66	3261	325.12	14213	0.27	0.32	0.1411	195
561949	2/0	4	19	2.03	1x6	2.16	47.88	1.40	50.67	4148	353.06	18953	0.27	0.32	0.1411	156
586400	3/0	2	19	2.03	1x4	2.16	44.15	1.65	47.50	3039	330.20	11944	0.21	0.26	0.1378	225
561950	3/0	3	19	2.03	1x4	2.16	46.08	1.40	48.87	3900	340.36	17920	0.21	0.26	0.1378	225
561952	3/0	4	19	2.03	1x4	2.92	50.52	1.40	53.31	4973	370.84	23892	0.21	0.26	0.1378	180
561953	4/0	3	19	2.03	1x4	2.16	49.35	1.65	52.71	4770	368.30	22597	0.17	0.20	0.1345	260
561954	4/0	4	19	2.03	1x4	2.92	55.24	1.65	58.60	6174	408.94	30131	0.17	0.20	0.1345	208
561955	250	3	37	2.29	1x4	2.92	54.51	1.40	57.30	5597	398.78	26700	0.14	0.17	0.1345	290
561956	250	4	37	2.29	1x4	2.92	59.23	1.65	62.59	7103	436.88	35600	0.14	0.17	0.1345	232
561957	300	3	37	2.29	1x4	2.92	58.29	1.65	61.65	6530	429.26	32040	0.12	0.15	0.1345	320
561958	300	4	37	2.29	1x4	2.92	63.45	1.65	66.80	8225	467.36	42720	0.12	0.15	0.1345	256
561959	350	3	37	2.29	1x3	2.92	59.94	1.65	63.30	7350	441.96	37380	0.10	0.13	0.1312	350
561960	350	4	37	2.29	1x3	2.92	65.30	1.65	68.66	9289	480.06	49840	0.10	0.13	0.1312	280
561961	500	3	37	2.29	1x3	2.92	66.80	1.65	70.15	9740	490.22	53400	0.07	0.10	0.1280	430
561962	500	4	37	2.29	1x3	2.92	72.95	1.65	76.30	12428	533.40	71200	0.07	0.10	0.1280	344
592314	600	3	61	2.29	1x2	2.92	72.29	2.03	76.50	11576	533.40	64080	0.06	0.08	0.1280	475
568478	750	3	61	2.29	1x2	2.92	79.12	2.03	83.39	14155	581.66	80100	0.05	0.07	0.1247	535
568479	750	4	61	2.29	1x2	3.68	86.94	2.03	91.21	18190	637.54	106800	0.05	0.07	0.1247	428
641155	1000	3	61	2.29	1x1	3.68	87.66	2.03	91.92	18187	642.62	106800	0.04	0.06	0.1214	615





All dimensions are nominal and subject to normal manufacturing tolerances

◇ Cable marked with this symbol is a standard stock item

^ Colour Code: 2/C black, Red

