



CSA TECK 90 1000V LSZH POWER CABLE

1000V Multi Conductor, 8AWG -1000 Kcmil Copper, FT4 - Flame Retardancy Rating, XLPE Insulation, Aluminum Interlocked Armour, Sunlight Resistant, -40°C - 90°C, Rated HL, AG14

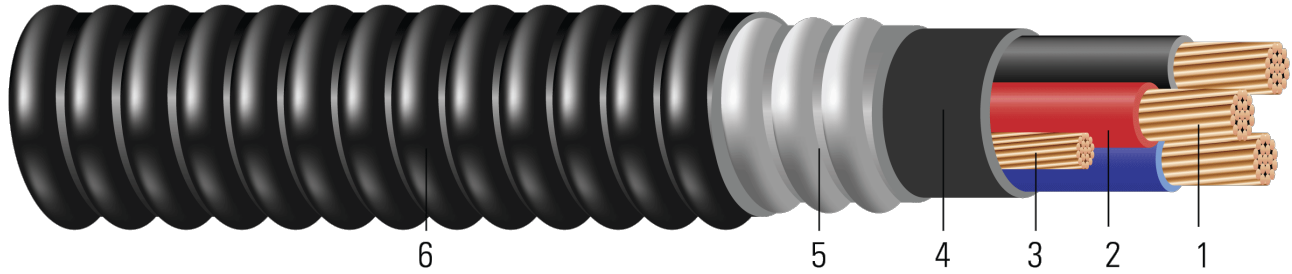


Image not to scale. See Table 1 for dimensions.

CONSTRUCTION:

- Conductor:** Class B stranded copper, compressed or compact, in accordance with ASTM B3 and B8.
- Insulation:** Cross-Linked Polyethylene (XLPE), Colour Code: 2/C black, white; 3/C red, black, blue; 4/C red, black, blue, white; For cables larger than No. 2 AWG or more than 4/C, the insulation is black and numbered
- Grounding Conductors:** Uninsulated Class B stranded grounding conductor
- Inner Jacket:** Black Polyvinyl Chloride (PVC)
- Armor:** Aluminum Interlocked Armour (AIA)
- Overall Jacket:** Black Low Smoke Zero Halogen (LSZH)

APPLICATIONS AND FEATURES:

For exposed or concealed wiring in wet or dry locations. For use in ventilated, non-ventilated and ladder type cable troughs and ventilated flexible cableway in wet, dry, or hazardous locations. Sunlight Resistant. Typical applications are for control, lighting and power circuits in: pulp and paper mills, steel mills, food processing plants, commercial centers, mines, generating stations, refineries, industrial plants and chemical plants. Rated for 1000 lbs./FT maximum sidewall pressure.

- -40°C - CSA Cold Bend and Impact Temperature
- -25°C - Min. Installation Temperature
- 90°C - Max. Continuous Operating Temperature

SPECIFICATIONS:

- ASTM B3 Soft or Annealed Copper Wire
- ASTM B8 Concentric-Lay-Stranded Copper Conductors
- CSA C22.2 No. 174 Cables in Hazardous Locations
- CSA C22.2 No. 131 Type TECK 90 Cable
- CSA C22.2 No. 2556 & No. 0.3 Wire and Cable Test Methods
- CSA LTGG [-40°C] - as per C68.10 - for Cold Bend and Impact rating
- CSA HL - for Hazardous Locations rating
- CSA SUN RES - for Sunlight Resistant rating
- CSA AG14 - Acid Gas Compliance
- IEEE 383 Flame Test (70,000 btu)
- IEEE 1202 FT4 Flame Test (70,000) BTU/hr Vertical Tray Test





SAMPLE PRINT LEGEND:

{SQMTR} SOUTHWIRE {CSA} LL90458 X/C XX AWG CU TECK 90 XLPE -40°C FT4 AG14 SUN RES 90°C 1000V HL USA





Table 1 – Weights and Measurements

Cond. Size	Cond. Number	Cond. Strands	Diameter Over Conductor	Insul. Thickness	Inner Jacket Thickness	Dia. Over Armor	Jacket Thickness	Approx. OD	Approx. Weight	Jacket Color
AWG/Kcmil	No.	No.	inch	mil	mil	inch	mil	inch	lb/1000ft	
4/0	4	19	0.512	80	115	2.175	65	2.307	4149	Black

All dimensions are nominal and subject to normal manufacturing tolerances

◊ Cable marked with this symbol is a standard stock item

^ Colour Code: 2/C black, Red

TBA stock codes are estimations only and actual product may vary. Please wait until a stock code is assigned to purchase connectors and/or fittings.

Table 2 – Electrical and Engineering Data

Cond. Size	DC Resistance @ 25°C	AC Resistance @ 90°C	Inductive Reactance	Max Pull Tension	Min Bending Radius	Allowable Ampacity At 75°C	Allowable Ampacity At 90°C
AWG/Kcmil	Ω/1000ft	Ω/1000ft	Ω/1000ft	lb	inch	Amp	Amp
4/0	0.051	0.062	0.041	6771	16.1	184	208

* Inductive impedance is based on non-ferrous conduit with one diameter spacing center-to-center.

