



## CSA TECK 90 1000V PVC POWER CABLE

1000V Multi Conductor, 8AWG -1000 Kcmil Copper, FT4 - Flame Retardancy Rating, XLPE Insulation, Aluminum Interlocked Armour, Sunlight Resistant, -40°C - 90°C, Rated HL, AG14

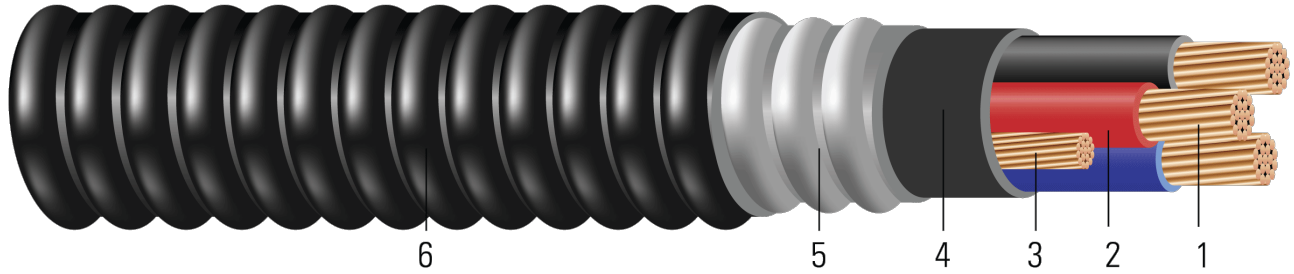


Image not to scale. See Table 1 for dimensions.

### CONSTRUCTION:

1. **Conductor:** Class B stranded copper, compressed or compact, in accordance with ASTM B3 and B8.
2. **Insulation:** Cross-Linked Polyethylene (XLPE), Colour Code: 2/C black, white; 3/C red, black, blue; 4/C red, black, blue, white; For cables larger than No. 2 AWG or more than 4/C, the insulation is black and numbered
3. **Grounding Conductors:** Uninsulated Class B stranded grounding conductor
4. **Inner Jacket:** Black Polyvinyl Chloride (PVC)
5. **Armor:** Aluminum Interlocked Armour (AIA)
6. **Overall Jacket:** Black PVC (optional colours available)

### APPLICATIONS AND FEATURES:

For exposed or concealed wiring in wet or dry locations. For use in ventilated, non-ventilated and ladder type cable troughs and ventilated flexible cableway in wet, dry, or hazardous locations. Sunlight Resistant. Typical applications are for control, lighting and power circuits in: pulp and paper mills, steel mills, food processing plants, commercial centers, mines, generating stations, refineries, industrial plants and chemical plants. Rated for 1000 lbs./FT maximum sidewall pressure.

- -40°C - CSA Cold Bend and Impact Temperature
- -25°C - Min. Installation Temperature
- 90°C - Max. Continuous Operating Temperature

### SPECIFICATIONS:

- ASTM B3 Soft or Annealed Copper Wire
- ASTM B8 Concentric-Lay-Stranded Copper Conductors
- CSA C22.2 No. 174 Cables in Hazardous Locations
- CSA C22.2 No. 131 Type TECK 90 Cable
- CSA C22.2 No. 2556 & No. 0.3 Wire and Cable Test Methods
- CSA LTGG [-40°C] - as per C68.10 - for Cold Bend and Impact rating
- CSA HL - for Hazardous Locations rating
- CSA SUN RES - for Sunlight Resistant rating
- CSA AG14 - Acid Gas Compliance
- IEEE 383 Flame Test (70,000 btu)
- IEEE 1202 FT4 Flame Test (70,000) BTU/hr Vertical Tray Test





**SAMPLE PRINT LEGEND:**

{SQMTR} SOUTHWIRE {CSA} LL90458 X/C XX AWG CU TECK 90 XLPE -40°C FT4 AG14 SUN RES 90°C 1000V HL USA

**Table 1 – Weights and Measurements**

Stock Number	Cond. Size	Cond. Number	Strand	Insul. Thickness	Ground	Inner Jacket Thickness	Dia. Over Armour	Overall Jacket Thickness	Approx. OD	Approx. Weight	Min Bending Radius	Max Pull Tension	DC Resistance @ 25°C	AC Resistance @ 75°C	Inductive Reactance @ 60Hz	Allowable Ampacity In Raceway 90°C†
	AWG/Kcmil		No.	mil	No. x AWG	mil	inch	mil	inch	lb/1000ft	inch	lb	Ω/1000ft	Ω/1000ft	Ω/1000ft	Amp
561978	1/0	4	19	80	1x6	85	1.766	55	1.876	2315	13.1	3379	0.102	0.122	0.044	136

All dimensions are nominal and subject to normal manufacturing tolerances  
◊ Cable marked with this symbol is a standard stock item  
^ Colour Code: 2/C black, Red  
TBA stock codes are estimations only and actual product may vary. Please wait until a stock code is assigned to purchase connectors and/or fittings.

**Table 2 – Weights and Measurements (Metric)**

Stock Number	Cond. Size	Cond. Number	Strand	Insul. Thickness	Ground	Inner Jacket Thickness	Dia. Over Armour	Jacket Thickness <sup>1</sup>	Approx. OD	Approx. Weight	Min Bending Radius	Max Pull Tension	DC Resistance @ 25°C	AC Resistance @ 75°C	Inductive Reactance @ 60Hz	Allowable Ampacity In Raceway 90°C
	AWG/Kcmil		No.	mm	No. x AWG	mm	mm	mm	mm	kg/km	mm	newton	Ω/km	Ω/km	Ω/km	Amp
561978	1/0	4	19	2.03	1x6	2.16	44.86	1.40	47.65	3445	332.74	15037	0.33	0.40	0.1444	136

All dimensions are nominal and subject to normal manufacturing tolerances  
◊ Cable marked with this symbol is a standard stock item  
^ Colour Code: 2/C black, Red  
TBA stock codes are estimations only and actual product may vary. Please wait until a stock code is assigned to purchase connectors and/or fittings.

